

**SERIES INFORMATION**  
The CW • Drama • 60 Mins  
Seasons 1-4 (62 eps total)  
S4 Premiere Date: May 31, 2023

From the creators of *The O.C.* and *Dynasty* comes a reimagining of the supernatural classic TV series following the adventures of one curious teen: **Nancy Drew**

**NANCY DREW** is a brilliant teenage detective whose sense of self came from solving mysteries in her hometown of Horseshoe Bay, Maine until her mother's untimely death derails Nancy's college plans. Devastated by her mother's passing, Nancy swears off crime-solving while crossing off the days until she can re-apply to college. But when a socialite is murdered, Nancy finds herself a prime suspect in the crime along with a group of other teens present at the scene. The five of them must team up to clear their own names – encountering emotional entanglements and even more mysteries along the way.

Season four begins as Nancy launches a new investigation to find a group of missing bodies from Horseshoe Bay's cemetery that have been dug up and stolen...or have possibly risen. As Nancy is drawn into this ghostly case, a string of unexplained paranormal crimes leads the Drew Crew to believe that the literal sins of the town's past have returned to haunt the living. When Nancy's efforts to protect her seaside hometown backfire, she must do the unthinkable to save her friends from both the supernatural and earthbound threats coming for them—and it could cost her everything, and everyone, she's ever loved.

#### STARRING



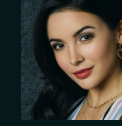
**KENNEDY  
McMANN**  
as Nancy Drew



**SCOTT  
WOLF**  
as Carson Drew



**LEAH  
LEWIS**  
as George Fan



**MADDISON  
JAIZANI**  
as Bess Marvin



**TUNJI  
KASIM**  
as Ned "Nick"  
Nickerson



**ALEX  
SAXON**  
as Ace



**RILEY  
SMITH**  
as Ryan Hudson

YOU CAN'T BURY THE TRUTH

# NANCY DREW

CBS Studios in association with Fake Empire  
Credits not final and subject to change.

#### EXECUTIVE PRODUCERS

Noga Landau, Melinda Hsu Taylor, Josh Schwartz, Stephanie Savage, Lis Rowinski, Alex Taub, Larry Teng, and S. Lily Hui



VERSION 121923