

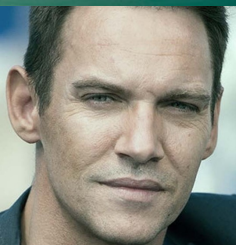


PRODUCT INFORMATION
SP Media • Sci-Fi, Thriller • 105 Mins
Premiere Date: August 12, 2022

Jonathan Rhys Meyers (*Vikings*, *The Tudors*) leads a fresh new cast in this sci-fi thriller about an artificial human in the near-future who questions her reality when memories of a past life begin to resurface.

A grieving detective in the near-future (Jonathan Rhys Meyers) hunts down criminals who trade artificial humans on the black market. In the fight to end AI exploitation, an underground resistance attempts to infiltrate him by sabotaging the programming of the artificial human assigned as his companion (Elena Kampouris) to behave like his late wife. She begins to question her reality as memories of a past life begin to surface in a world where nothing is as it seems.

STARRING



**JONATHAN
RHYS MEYERS**
as William Bradwell



**ELENA
KAMPOURIS**
as Meredith



**DORON
BELL**
as Agent Jack



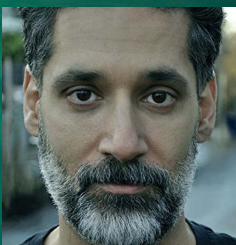
**AGAM
DARSHI**
as Louise



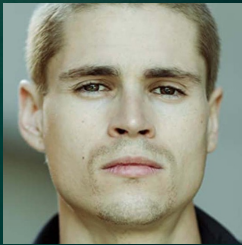
**ALIX
VILLARET**
as Lydie



**RACHELLE
GOULDING**
as Ollie



**STEPHEN
LOBO**
as Marion



**FLETCHER
DONOVAN**
as Keene

DIRECTOR AND WRITER
James Bird

PRODUCERS
Steven Paul and Scott Karol

EXECUTIVE PRODUCERS
Christine Holder, Mark Holder, Greg Weiss, Austin Aronson and Charles Cooper

WIFE LIKE

SP Media
Credits not final and subject to change.

